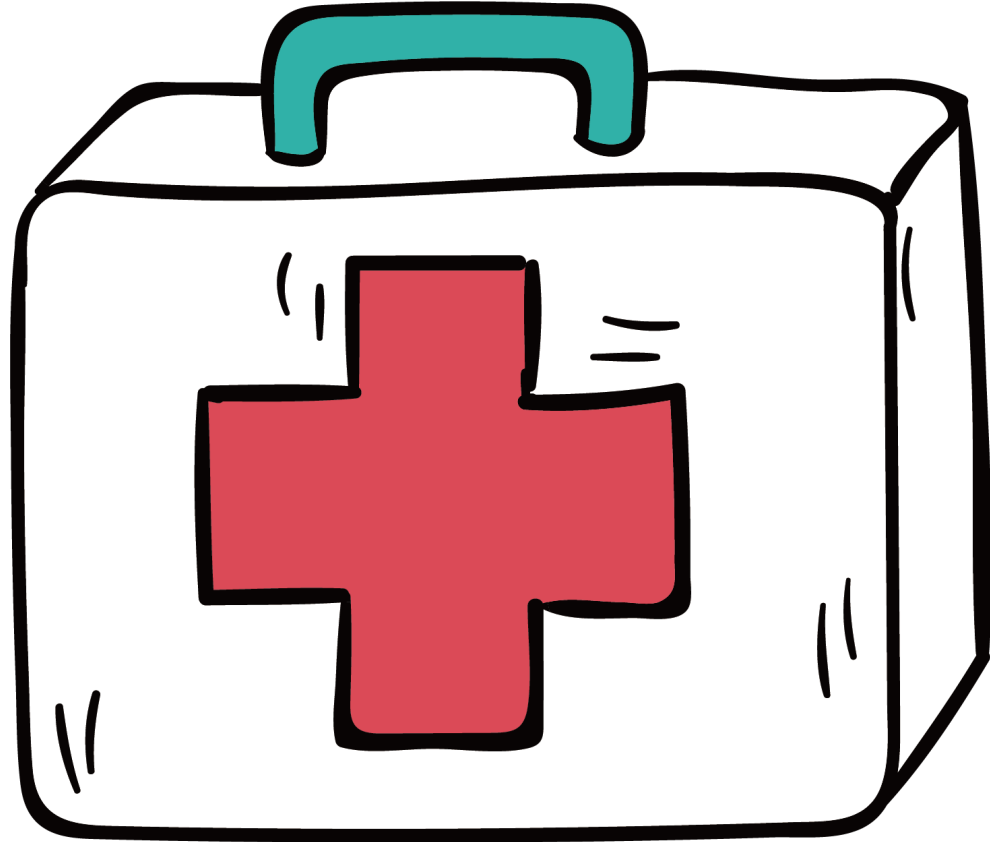




Hollybank News

25th January 2022



Pandemic Childcare

It is becoming increasingly hard to find cover for ill staff, in many sectors, including education.

Illness occurs without notice and although we do our best to find cover, the pandemic is making this contingency plan increasingly difficult.

Please note we will give you as much notice as we can if this situation occurs in your child's class, but it is best to have a childcare plan in place in case of such an emergency.



GROWING TOGETHER

WE'RE TAKING PART IN
CHILDREN'S MENTAL
HEALTH WEEK

A child's mental health is just
as important as their physical
health and deserves the same
quality of support.

Rate Middleton

Managing child behaviour top tips

Consequences and Consistency

- × If rules and guidelines are not followed by your child then consequences will need to be given. These must be realistic, fit with child's age and stage of development and teach a lesson. Most importantly they must be consistently enforced. Start with small, time-limited consequences, and then slowly increase the time or intensity of the consequence for repeating the same behaviour.

Choose your battles

- × Try to ignore trivial things and focus on the important things. Remember that you are a role model to your child and so you should aim to model the behaviours you expect to see from them.

Spend time together

It's important that you spend time with your child, listen to them and have fun together. Building your relationship with your child will make them feel loved and understood by you and therefore will make it easier to encourage positive behaviour.



Proudly sponsored by

George Best
BELFAST
CITY AIRPORT

parentingni.org

f /parentingNI @parentingNI

Managing child behaviour top tips

One of the biggest challenges parents face is managing difficult behaviour. Most children and young people can be disruptive at times when they behave in a challenging way. It helps to have options that can be used to help manage their behaviour.

Ages and stages

Be sure that you know what your child is capable of doing depending on his or her age and stage of development. Sometimes we think a child is misbehaving but the behaviour can be quite natural for the developmental stage they are at. Knowing this helps you look at behaviour management more objectively and less reactively.

Clear guidelines

- Be clear about the rules you have set around acceptable behaviour. With younger children give one very clear statement rather than a lot of rules together works best. With younger children give clear direction rather than a lot of rules together works best.

Positive reinforcement and praise

Try to avoid being critical and use praise whenever possible. This will encourage children to continue behaving in an acceptable manner. Reinforcement should be focused on promoting a child's self-esteem and feelings of accomplishment and cooperation. Children can be rewarded through Star Charts, playing a game, going to the park, or simply give verbal praise and appreciation.



TOP TIPS

WORKING TOGETHER

Thank you to everyone who completed our short survey. It is now closed and we will be sharing the results here shortly.



Our Mental Maths focus is Partitioning. Here are some tips to help at home.



Partitioning is a useful way of breaking numbers up so they are easier to work with

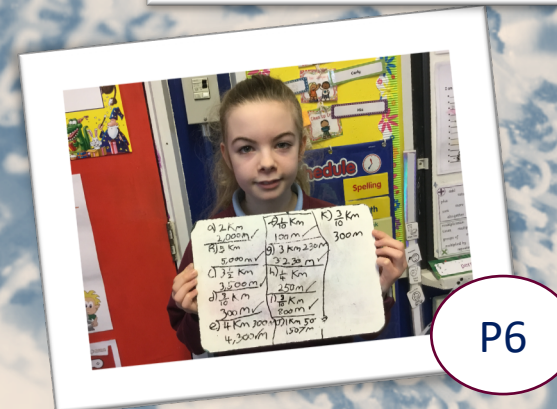
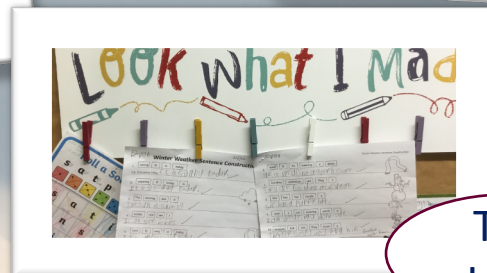
$$52+27=79$$

$$50+20=70$$

$$2+7=9$$

<https://www.bbc.co.uk/bitesize/topics/z69k7ty/articles/zyk8pbk>

WORK OF THE WEEK...



SAFE:



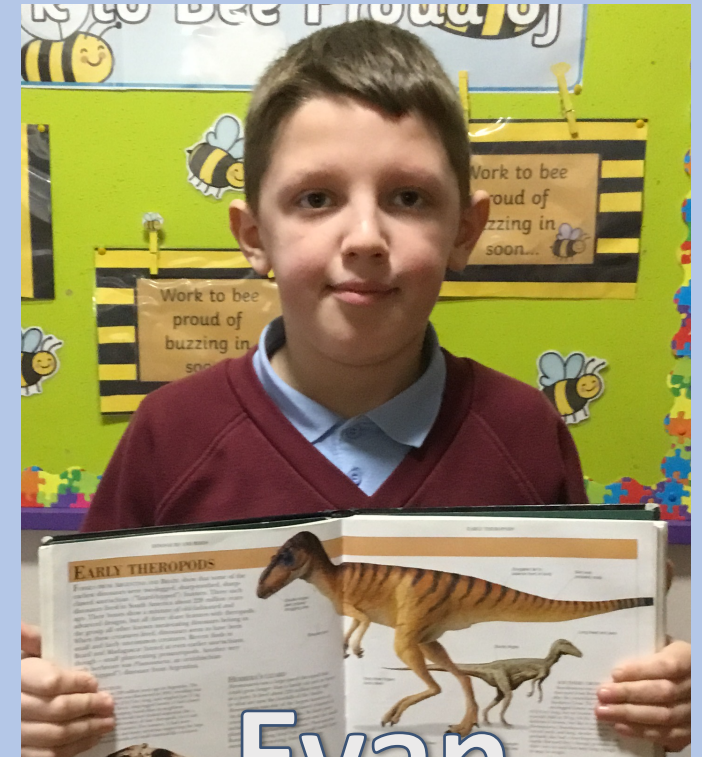
WE HAVE BEEN CAUGHT BEING SAFE THIS WEEK...WELL DONE GUYS!



Weronika



Kyle



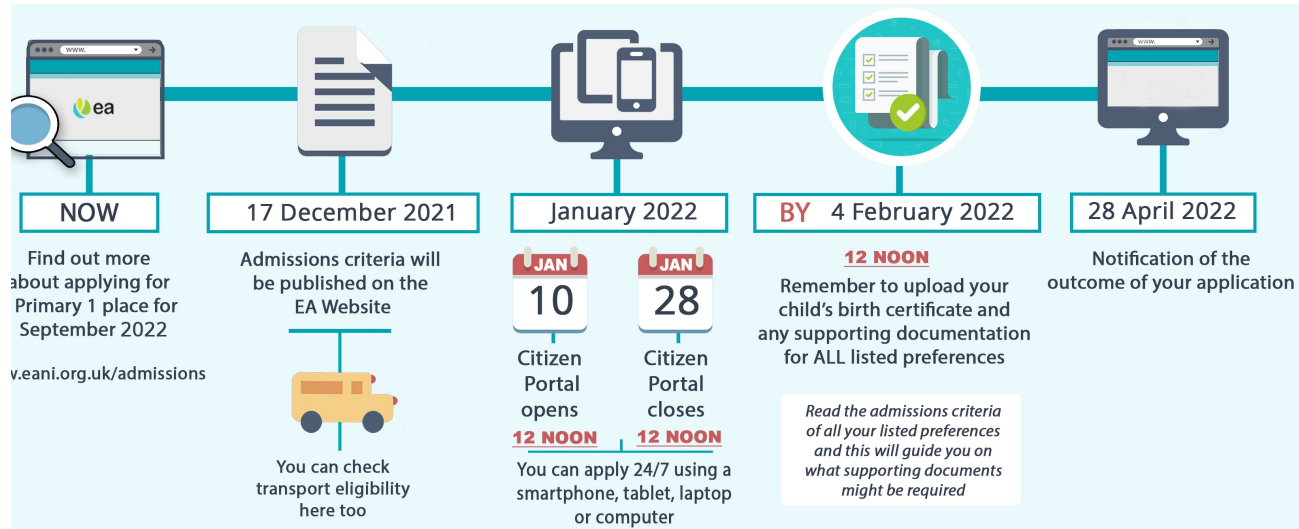
Evan

P1 APPLICATIONS: PLACES ARE FILLING UP FAST SO REMEMBER TO APPLY ONLINE SOON.

ea KEY DATES FOR PARENTS : Admissions Process for Primary One Places 2022

Children born on or between 2 July 2017 and 1 July 2018 will have reached compulsory school age in September

Children born on or between 2 July 2018 and 1 July 2019 can apply for a place in a reception class



As we cannot hold an open night this year, we have a video tour on our website.

Our PreSchool children were able to visit P1 for a story, and take home a prospectus.

If you would like to visit our P1 classroom, please phone our school office on 02890 864944 and we will arrange an appointment for you to view our fabulous school.



Thank you to Beverley from SUSTRANS for getting us active and teaching us lots of new skills, from orienteering to road safety. We had lots of fun!

P1

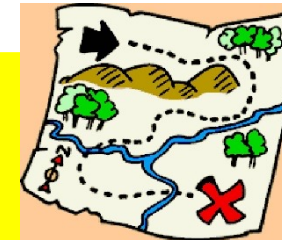
Active Travel Scavenger Hunt

We were searching for lots of hidden pictures around the playground which taught us about how to keep safe while we are travelling.



P3 & P4 & The Hive Road Safety

We were learning about crossing roads using 'stop, look, listen and think', and using pedestrian crossings.



P5, P6 & P7 Mini Orienteering

We used an aerial photo of our school to find lots of hidden words. We learned about following North and using an aerial photo as a map.

Post Primary Applications – Primary 7

Admissions 2022/23

If your child was born between 2 July 2010 and 1 July 2011 you will need to apply for their post-primary school place for September 2022.

Admissions criteria will be published on Wednesday 12 January 2022.

Online applications will open at 12noon on Tuesday 1 February 2022 and will close at 4pm on Wednesday 23 February 2022.

More information will be available in due course to support you in making an application.



KEY DATES FOR PARENTS : APPLYING FOR A POST-PRIMARY SCHOOL PLACE FOR SEPTEMBER 2022

THE USUAL AGE GROUP OF PUPILS WHO TRANSFER TO POST-PRIMARY SCHOOL WILL HAVE ATTAINED THE AGE OF 11 YEARS BY 1 JULY 2022 , I.E. PUPILS WITH DATES OF BIRTH FROM 2 JULY 2010 TO 1 JULY 2011 , INCLUSIVE.

